

# White Paper

## ALERE<sup>®</sup> Mobility and the Cloud

March 12, 2014




769 Youngs Hill Rd  
Easton, PA 18040  
610-258-5161  
[www.tiwcorp.com](http://www.tiwcorp.com)

# ALERE Mobility and the Cloud

---


## Cloud setup

The ALERE Mobility module and mobile applications require the user to have access to a database on the “Cloud”. In other words, the database must be accessible from the Internet. To set up Mobility, a MySQL database must be created either on the user’s own web server or through a third party web hosting service. Most hosting services provide MySQL database support.



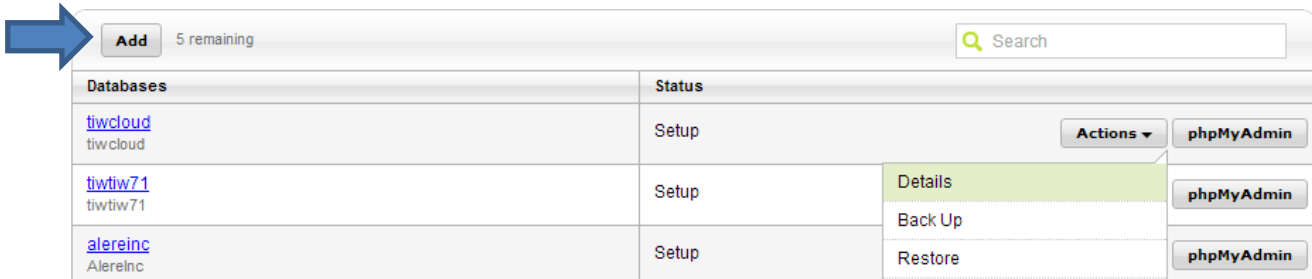
1 Website	Unlimited Websites	Unlimited Websites
Unlimited Bandwidth	Unlimited Bandwidth	Unlimited Bandwidth
100 GB Disk Space	Unlimited Disk Space	Unlimited Disk Space
10 MySQL Databases (Linux OS) ⓘ 1 MS SQL Database (Windows OS)	25 MySQL Databases (Linux OS) ⓘ 2 MS SQL Database (Windows OS)	Unlimited Databases ⓘ

We will use a GoDaddy.com hosting account to demonstrate how a cloud database is typically created through a web hosting service. Once an account has been created, proceed to the web hosting dashboard and find the MySQL section.



Applications	None
MySQL Databases	5 / 10
SQL Server Databases	0 / 1
Hosted Domains	1 Domain

Clicking on “MySQL Databases” brings up a database management screen where new databases can be created and existing databases can be modified.



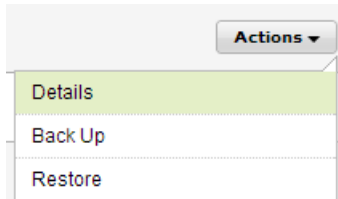
Click “Add” to create a new empty database for use with ALERE Mobility.

The screenshot shows the 'Add a MySQL Database' form. At the top, there are two tabs: 'MySQL' (selected) and 'SQL Server'. The main heading is 'Add a MySQL Database'. Below the heading is a sub-heading: 'Set up a database for your data-driven or data-collection site.' There is a red asterisk followed by the word 'Required'. The form contains several fields: 'MySQL version:' with the value '5.0'; 'Friendly name:' with a help icon and the value 'InTouch Demo'; 'Database name and username: \*' with a help icon and the value 'itdem01'; 'New password: \*' with a masked password field; and 'Confirm password: \*' with a masked password field. At the bottom of the form, there is a button with a plus sign and the text 'Additional options' followed by a help icon. Below the form are two buttons: 'OK' and 'Cancel'.

Fill in the required fields. Note that, with GoDaddy.com, the Database Name and User ID are the same. With other services, these names could be different. The User ID (username) and Password specified here will be used by both ALERE and mobile applications to access the database. Be sure to choose a strong password and keep it secure, as this is the first line of defense for your cloud data.

You may also have the option of creating a User ID that has “read only” access to the database. This is optional, and the “read only” ID should NOT be used for ALERE or the mobile applications.

Once the new database has been created, it will be shown on the database management screen.



Click the “Actions” menu and select “Details” to see more information about the database. Take note of the “Hostname” as this will be needed by ALERE (along with the database name, username and password) to connect to the database.

## Database Details

Manage your database details. ?

<b>Back Up</b> <b>Restore</b> <b>Delete</b> <b>Code Sample</b>		
<b>Database name and username:</b>	itdemo1	
<b>Read Only User:</b>	itdemo	<b>Reset</b>
<b>Password:</b>	<hidden>	<b>Reset</b>
<b>Friendly Name:</b>	InTouch Demo	<b>Edit</b>
<b>Admin URL (phpMyAdmin):</b>	https://p3nlmysqldm001.secureserver.net/nld50/61	<b>Visit</b>
<b>MySQL version:</b>	5.0 (Direct access allowed)	
<b>Status:</b>	Setup	
<b>Last Activity:</b>	Backup on 2/19/2014 at 8:37:02 AM	
<b>DSN:</b>	Installed	<b>Uninstall</b>

**Hostname:**  
itdemo1.db.10192619.hostedresource.com

## Connecting ALERE to the Cloud

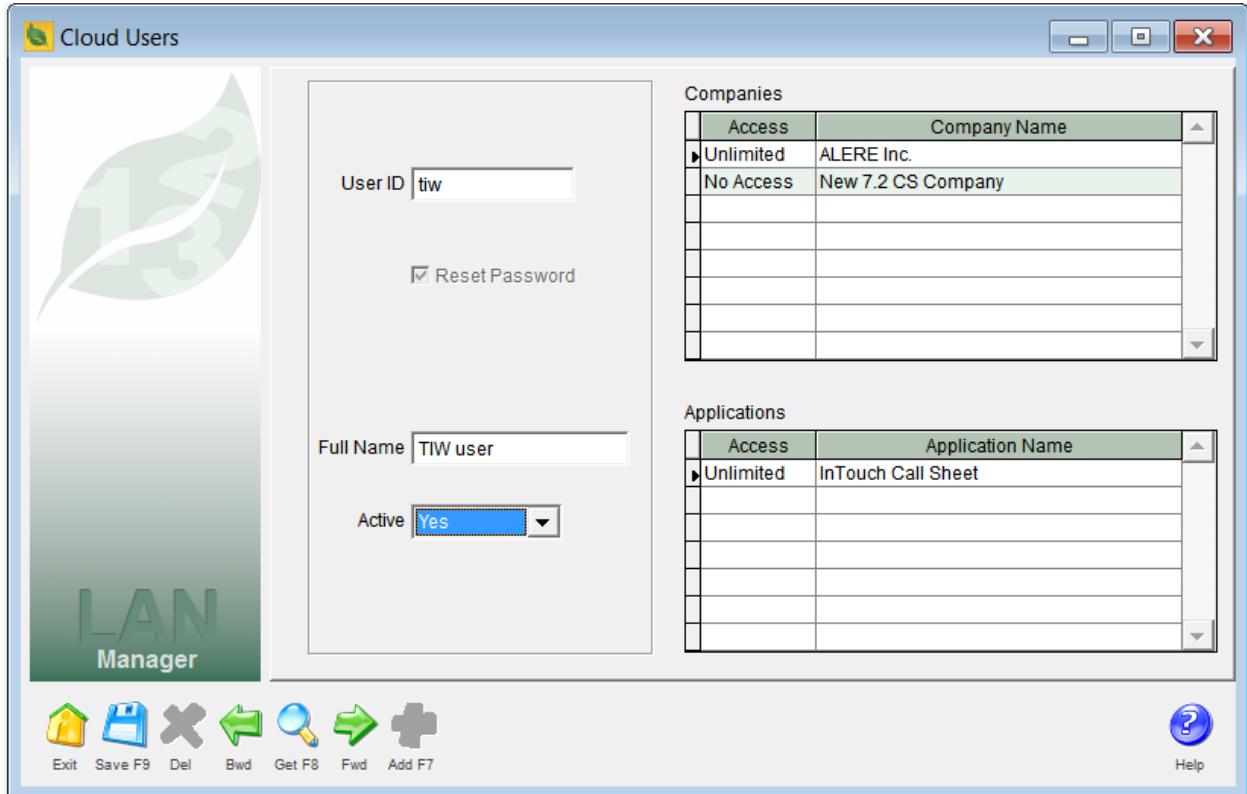
Since ALERE will be connecting to a MySQL database, it is necessary to install the “MySQL Connector” ODBC driver on any workstation that will sync data with the cloud. Find the file “mysql-connector-odbc-5.2.5-win32.msi” in the ALERE program folder and double click it to run the installation. It is recommended to use all of the default settings.



Next, open the ALERE Accounting program and navigate to the Manager > Utilities > Company Defaults screen. Select the “Options / Cloud” tab. At the bottom of the screen, fill in the Cloud Connection information. “Cloud Server” refers to the MySQL host name. “Database” refers to the database name.

Cloud Connection			
Cloud Server	itdemo1.db.10192619.hostedresource.com		
User ID	itdemo1	Password	*****
Database	itdemo1		

Save these settings and go to Extensions > Mobility > Cloud User Logins. On this screen, you will create a record for each user who will have access to Mobility. Select which ALERE companies and mobile applications the user will be able to access. The level of access may also be specified for each – No Access, Read Only or Unlimited.



A user’s Mobility access can be activated or deactivated on this screen by changing the “Active” dropdown box.

If a user’s password has been forgotten and needs to be reset, check the “Reset Password” box and click “Save”. When the user next attempts to access the cloud data from a mobile device, he will be required to create a new password.

## Selecting Data for the Cloud

To specify which ALERE data will be synced with the cloud database, open Extensions > Mobility > Manage Cloud Data. This screen allows you to select which fields in each table will be accessible from the cloud. Simply click the checkbox next to the table name in the left hand column, and then click the checkboxes next to the desired fields in the right hand column.

Include	Table Name	Include	Encode	Field Name	Field Description
<input type="checkbox"/>	COCLOUD	<input checked="" type="checkbox"/>	<input type="checkbox"/>	CONTACTID	Contact ID
<input checked="" type="checkbox"/>	COCODES	<input checked="" type="checkbox"/>	<input type="checkbox"/>	COID	Company ID
<input checked="" type="checkbox"/>	COCONLOG	<input checked="" type="checkbox"/>	<input type="checkbox"/>	LOCID	Location ID
<input type="checkbox"/>	CODEFLT	<input checked="" type="checkbox"/>	<input type="checkbox"/>	ACTIVE	Active Status
<input type="checkbox"/>	COEMAIL	<input checked="" type="checkbox"/>	<input type="checkbox"/>	NAME	Contact Name
<input type="checkbox"/>	COEMLOG	<input checked="" type="checkbox"/>	<input type="checkbox"/>	TITLE	Contact Title
<input type="checkbox"/>	COEXRATE	<input checked="" type="checkbox"/>	<input type="checkbox"/>	PHONE	Phone Number
<input type="checkbox"/>	COINFO	<input checked="" type="checkbox"/>	<input type="checkbox"/>	EXTENS	Phone Extension
<input type="checkbox"/>	COKEYCHG	<input checked="" type="checkbox"/>	<input type="checkbox"/>	PHONE2	Alternate Phone Number
<input type="checkbox"/>	COLABOR	<input checked="" type="checkbox"/>	<input type="checkbox"/>	EMAIL	Email Address
<input type="checkbox"/>	COLDADDR	<input checked="" type="checkbox"/>	<input type="checkbox"/>	GROUPID	Group or Criteria Code
<input type="checkbox"/>	COLDLOG	<input checked="" type="checkbox"/>	<input type="checkbox"/>	ISPRIMARY	Primary Contact at this Location
<input type="checkbox"/>	COLDMISC	<input checked="" type="checkbox"/>	<input type="checkbox"/>	NOTES	Contact Notes
<input type="checkbox"/>	COLDNAME	<input checked="" type="checkbox"/>	<input type="checkbox"/>	SALESID	Sales ID
<input type="checkbox"/>	COLOOKUP	<input checked="" type="checkbox"/>	<input type="checkbox"/>	IMAGE1	Contact Image
<input checked="" type="checkbox"/>	COMISC	<input type="checkbox"/>	<input type="checkbox"/>	MISC01	User Miscellaneous Field 1
<input checked="" type="checkbox"/>	COPEOPLE				
<input type="checkbox"/>	CORULES				
<input type="checkbox"/>	COTXTBL				

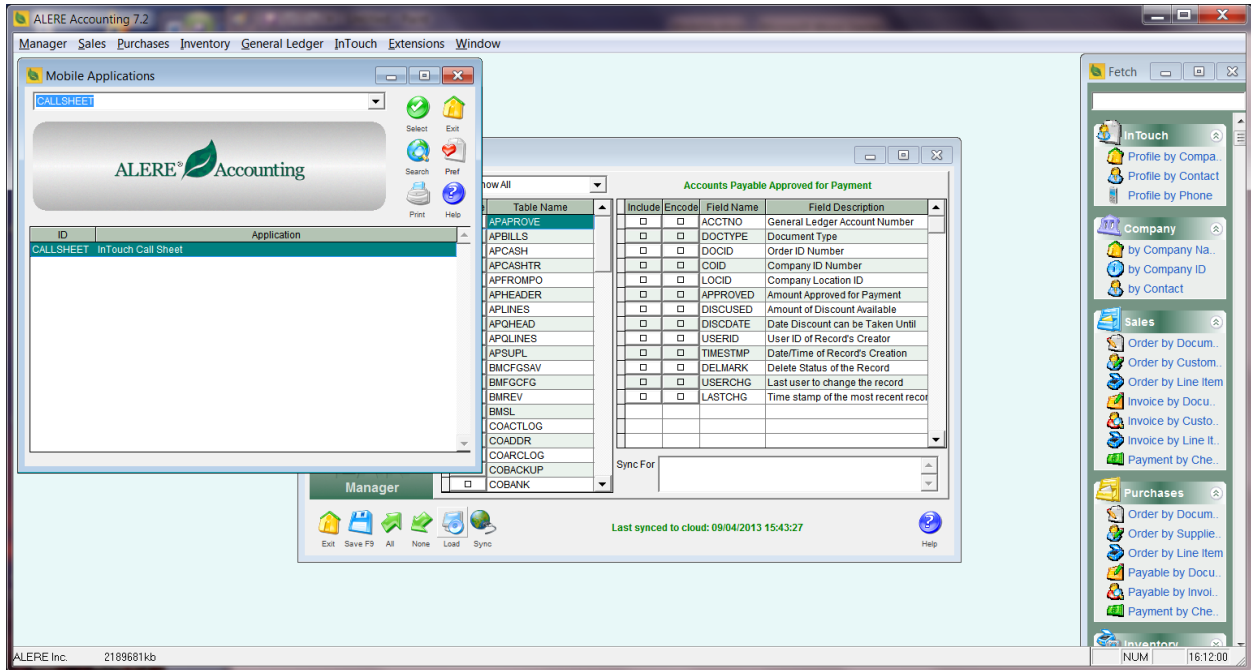
Sync For:

Last synced to cloud: 09/04/2013 15:43:27

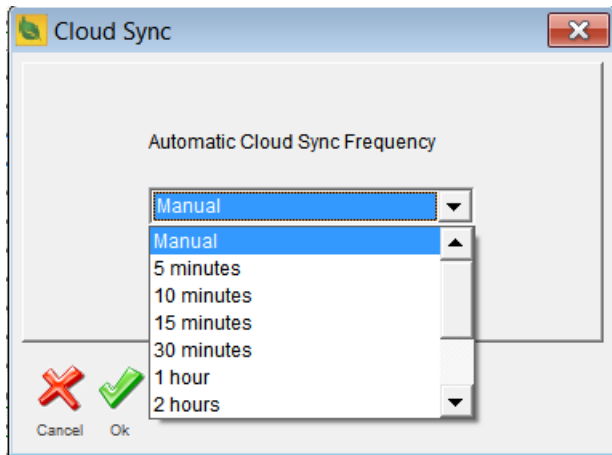
Exit Save F9 All None Load Sync Help

To limit the amount of data that is uploaded for a particular table, put a filter expression into the “Sync For” box. For example, the filter expression “OrdDate > DATE(2010,12,31)” for the SLHEADER table will only upload Sales Orders dated after the year 2010.

To select all of the required fields for a particular mobile application, click the “Load” button and then select the application from the browse list.



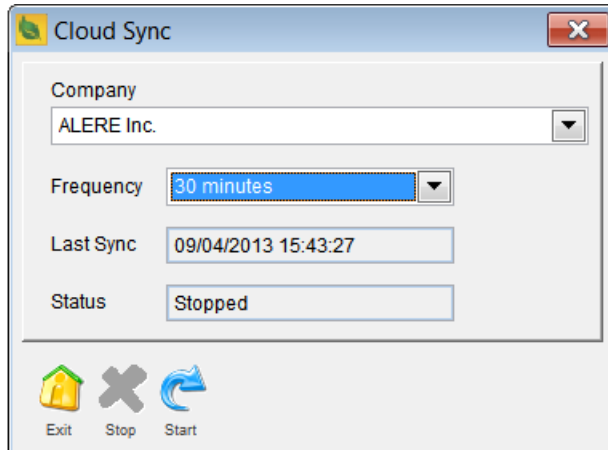
Clicking the “Sync” button activates the Cloud Sync screen. This screen provides an opportunity to set how often the data should be automatically synced. When the “OK” button is pressed, a sync between ALERE and the cloud database will be initiated.





## Updating the Cloud Automatically

The ALERE program folder contains a program called CLDSYNC.EXE which can be run in the background on a server to automatically sync ALERE data with the cloud at the selected time interval. Simply start the program, select the appropriate ALERE company and sync frequency, then click the “Start” button.



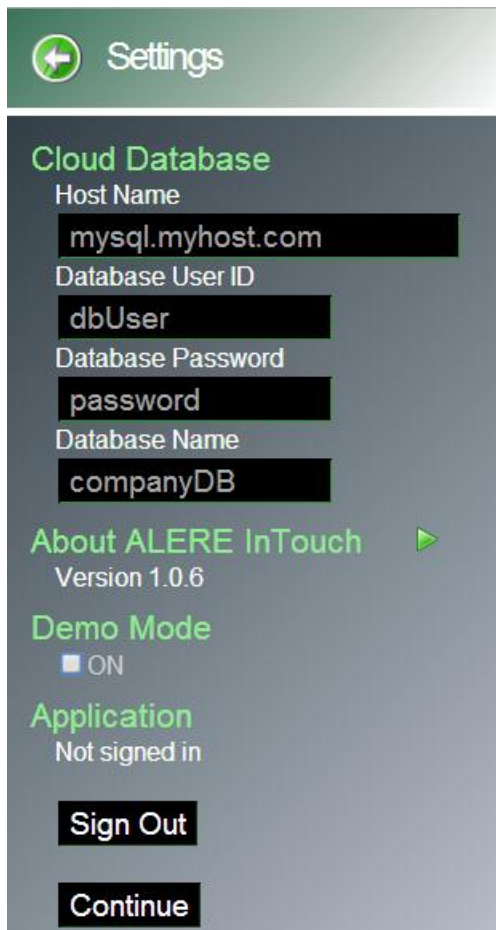
To change the frequency, first stop the automatic sync process by pressing the “Stop” button. To keep the cloud up to date, it is recommended to run this program on a machine that is always turned on and connected to the Internet. The program can be minimized once the automatic sync process has been started. Note that pressing the “Exit” button will stop this process.

To sync data for more than one company, multiple instances of the CLDSYNC program would need to run simultaneously.

## Connecting Mobile Applications to the Cloud

Mobile applications can be downloaded from an app store such as Google Play. They can also be run inside of a web browser if an app is not available for a particular device. The web version of the ALERE InTouch app can be found at <http://www.tiwdev.com/web/intouch/index.php>.

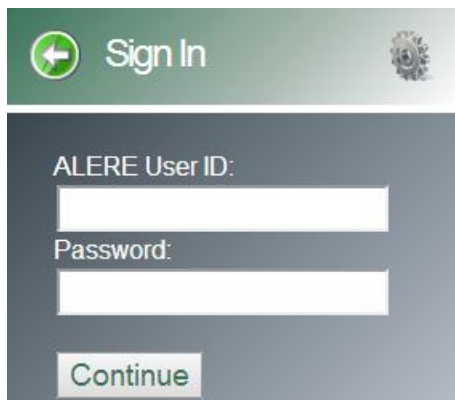
When first running a mobile application, such as ALERE InTouch, go to the application's settings to fill in the Cloud Database connection information. When running the application for the first time, the Settings screen should come up immediately. To demonstrate the application with sample data, switch the button under "Demo Mode" to "ON". This will automatically fill the Cloud Database information with settings for a predefined sample database. Click the "Continue" button to save and exit Settings.



When running the application, the Settings can be accessed from either the device's menu key or by touching the gear icon in the upper right corner.



Before viewing the data, the user will be required to sign in with a login created on the ALERE Cloud User Logins screen. When using "Demo Mode", the default User ID is "tiw" with the Password "demo".



To sign out of the application and sign in with a different User ID, go to Settings and click the "Sign Out" button.